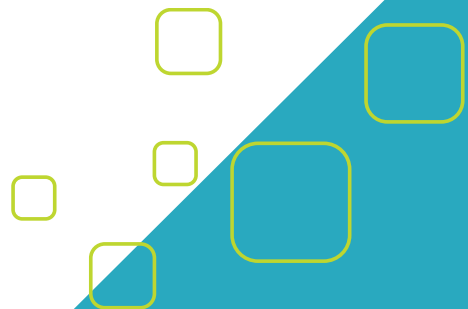
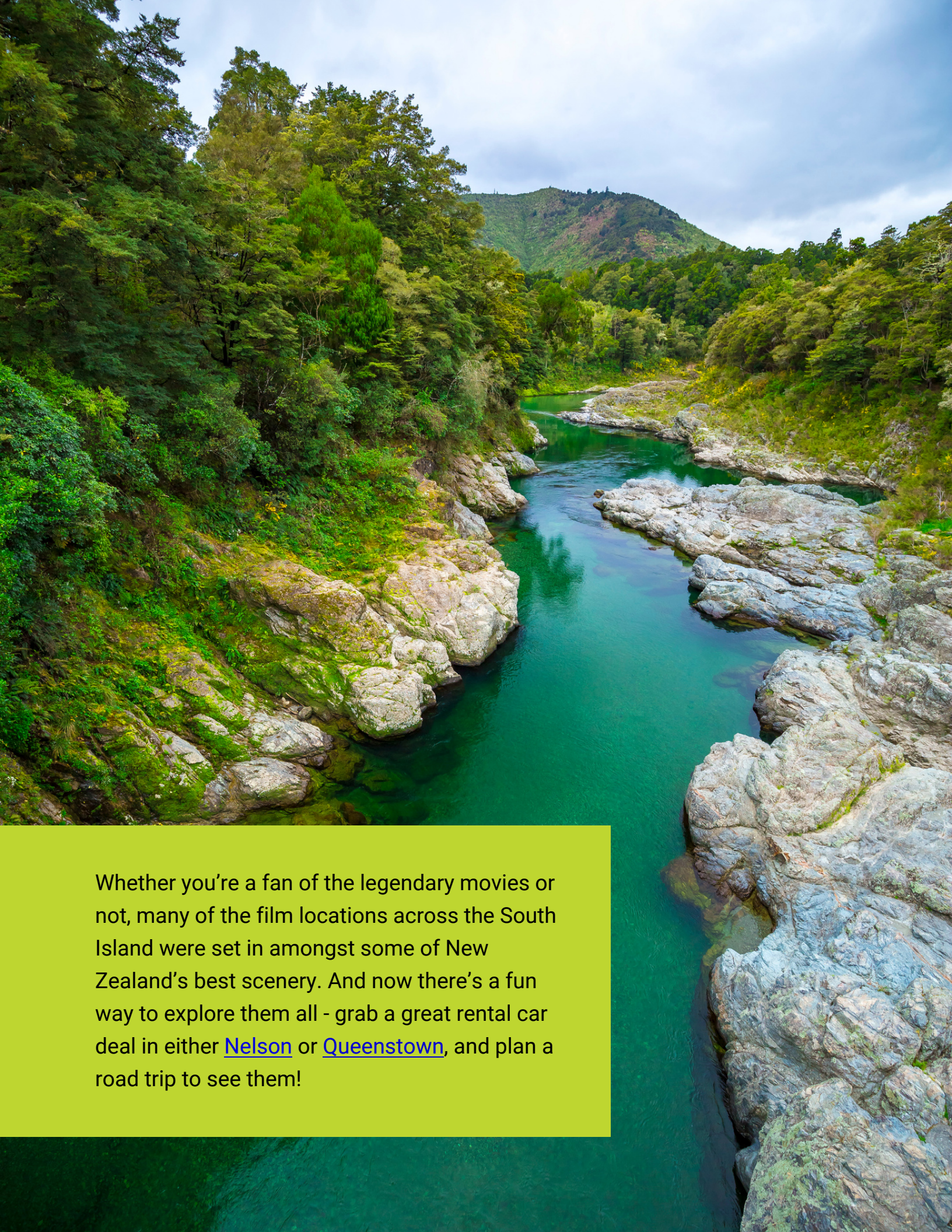




Your Bonus Free Guide - Where to Find the **Lord of the Rings** movie locations.





Whether you're a fan of the legendary movies or not, many of the film locations across the South Island were set in amongst some of New Zealand's best scenery. And now there's a fun way to explore them all - grab a great rental car deal in either [Nelson](#) or [Queenstown](#), and plan a road trip to see them!

Ten Lord of the Rings movie locations in Nelson, Queenstown and surrounds.



Canaan Downs

Head northwest out of Nelson to Takaka Hill and stop off at Canaan Downs Scenic Reserve. Here you'll find the ancient beech trees which set the scene for Chetwood Forest in Lord of the Rings: Fellowship of the Ring, where the Hobbits fled from Bree and the Black Riders.



Salisbury Falls and Aorere River

The two and a half hour drive from Nelson to Salisbury Falls (which flows into the Aorere River) is definitely worth it. On a hot day it is the perfect place for a refreshing swim, and you'll also see the site where Tauriel and Legolas meet in The Hobbit: The Desolation of Smaug.



Pelorus River

A valley along Marlborough's Pelorus River was hand-picked by Sir Peter Jackson himself, and it's here you'll find a slice of Middle Earth. The backdrop provided just the right place for the dwarves to escape in barrels down the river, a scene from *The Hobbit: Desolation of Smaug*.



Jens Hansen Studio

Okay, so it's not exactly a filming location. But you could never have had *Lord of the Rings* without the 'One Ring', which is why many fans relish the opportunity to visit Jens Hansen Studio in Nelson. Danish-born jeweller Jens Hansen created fifteen prototypes of the ring, from which the final movie ring design was chosen.

Unfortunately Hansen passed away from cancer before ever seeing his creations on the big screen. But his legacy lives on through his jewellery store in Nelson's CBD.



Paradise

Around 45 minutes drive from Queenstown, you'll find a place called Paradise just north of Glenorchy (next to Diamond Lake). This site was the location of Isengard, and you'll see it where Gandalf approaches Saruman's Tower.



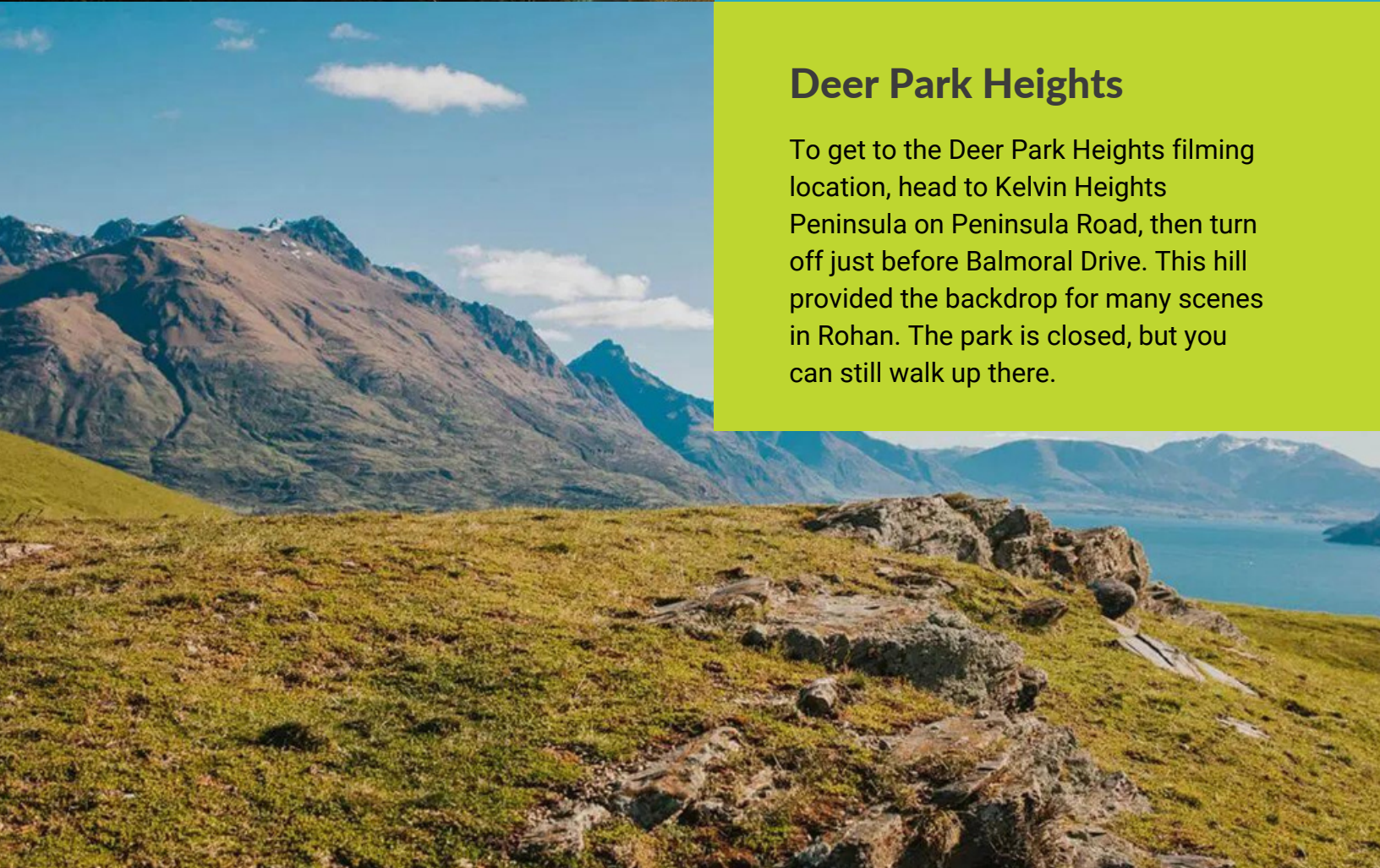
If you need a rental car to visit these incredible movie locations, we have a large selection of quality cars for hire.

www.nzrentacar.co.nz



Twelve Mile Delta

Head to the campsite of Twelve Mile Delta, the south west of Queenstown, to see where Frodo, Sam and Gollum watched the battle between Faramir's rangers and the Oliphunts. It's also the setting where Sam and Gollum talk about 'PO-TA-TOES boil 'em, mash 'em, stick 'em in a stew!'



Deer Park Heights

To get to the Deer Park Heights filming location, head to Kelvin Heights Peninsula on Peninsula Road, then turn off just before Balmoral Drive. This hill provided the backdrop for many scenes in Rohan. The park is closed, but you can still walk up there.

Kawarau Gorge

The Kawarau River, close to the bridge, was used as the River Anduin, which is where the Fellowship canoe up to the Pillars of the Kings. You need to walk a bit further upstream from the bridge, so you can either park at the bridge and walk along the riverside walkway, or take the turnoff to Chard Farm Winery, and you'll find it not far along this road.



Arrowtown

It's a short walk from Arrowtown's CBD to find the Ford of Bruinen, where Arwen and Frodo crossed the Bruinen River to escape from the Nazgul. Park in the parking lot next to Butler's Green, then head north to the Arrow River, and a few metres upstream you'll find the setting for this scene.



Arrowtown

Another easy-to-access film location is in the east of Arrowtown, at Wilcox Green. Known as the Gladden Fields, this was where isildur lost the One Ring, and it was found again centuries later by Deagol the Stoor.



If you need a rental car to visit these incredible movie locations, we have a large selection of quality cars for hire.

www.nzrentacar.co.nz